

090 Series FASTON Tabs(Mates with all "090"Series FASTON Receptacles)

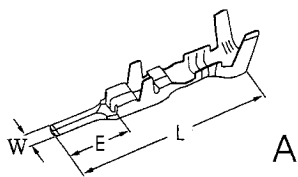


FIG	PART NO.	TREATMENT	WIRE RANGE		Dimension(mm)				THICKNESS (mm)	QTY	REMARKS
			mm ²	AWG#	H	W	L	E			
A	817101BS	S	0.8~1.3	18~16	0.6	2.2	26.7	8.0	0.3	4,000	
A	817102BS	S	0.5~0.8	20~18	0.6	2.2	26.7	8.0	0.3	4,000	
A	817103BS	S	0.3~0.5	22~20	0.5	2.2	20.4	8.0	0.5	4,000	

090 Series FASTON Tabs(Mates with all "090"Series FASTON Receptacles)

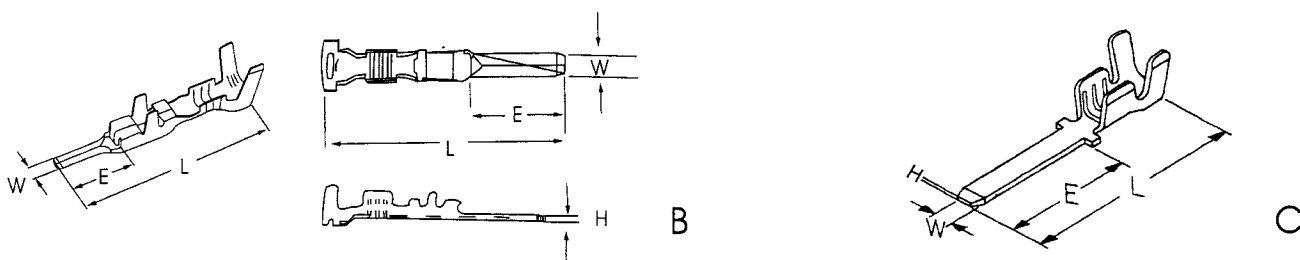


FIG	PART NO.	TREATMENT	WIRE RANGE		Dimension(mm)				THICKNESS (mm)	QTY	REMARKS
			mm ²	AWG#	H	W	L	E			
B	817104BS	S	1.25~2.0	16~14	0.6	2.2	23.6	8.4	0.3	4,000	防水栓
B	817108BS	S	0.3~0.5	22~20	0.6	2.2	23.6	8.4	0.3	4,000	防水栓
B	817121BS	S	0.8~1.25	18~16	0.6	2.2	23.6	8.4	0.3	4,000	防水栓
C	817151BS	2	0.85~1.25	18~16	0.5	2.2	20.7	8.7	0.5	10,000	焊接端子

ORDER INFORMATION

8171XX $\frac{B}{1}$ $\frac{S}{2}$ $\frac{0}{3}$ $\frac{0}{4}$

1. SERIES
2. MATERIAL : B=BRASS
3. PACKAGE :
S=SERIAL
4. SURFACE TREATMENT :
S=Pre-Tin
0=NONE
2=TIN PLATING